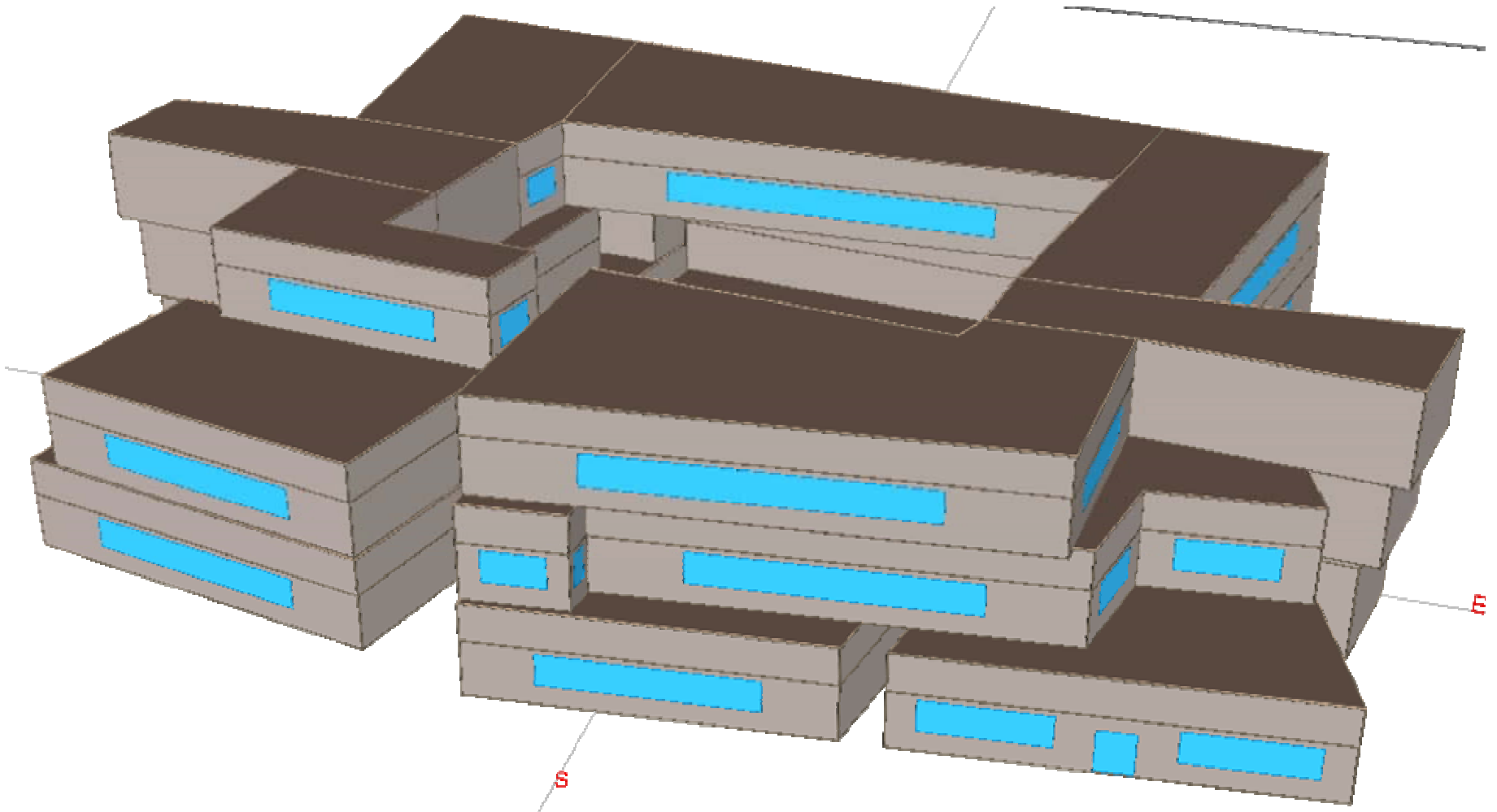


ANNUAL ENERGY PERFORMANCE OF DESIGN MODELED IN eQUEST

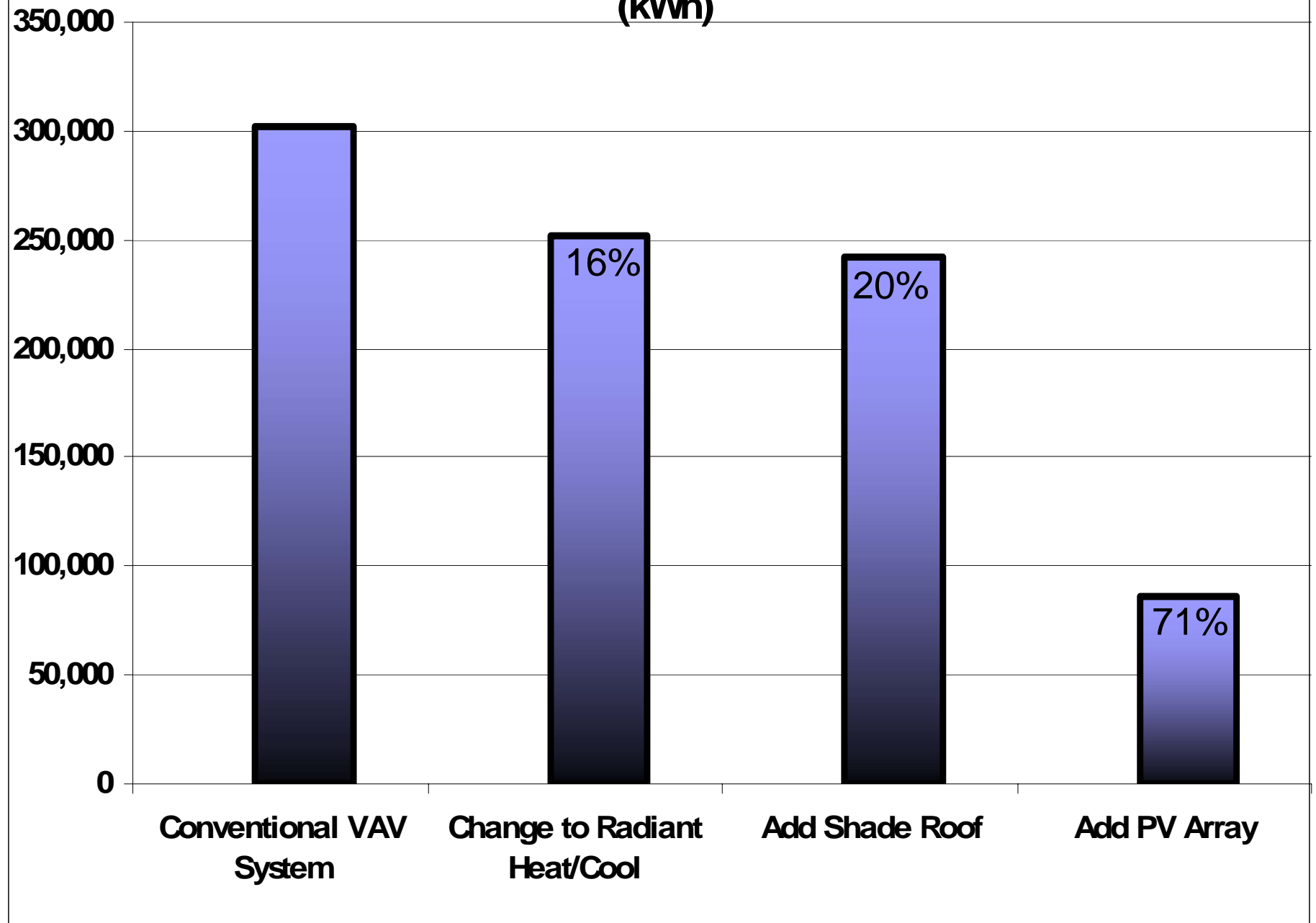
THE FINAL BUILDING DESIGN WAS MODELED USING FOUR PARAMETRIC RUNS IN ORDER TO SEE THE AFFECT EACH HAS ON BUILDING ENERGY USE. THE 4 RUNS WERE:

1. DESIGN MODELED WITH A CONVENTIONAL VAV HVAC SYSTEM
2. DESIGN MODELED WITH A RADIANT HEATING AND COOLING SYSTEM
3. DESIGN MODELED WITH RADIANT SYSTEM AND SHADE ROOF
4. DESIGN MODLED WITH RADIANT SYSTEM AND SHADE ROOF WITH PV



ANNUAL ENERGY USE AND % SAVINGS FROM UTILITY GRID

(kWh)



ANNUAL ENERGY COST AND % SAVINGS

